



# ARHITREC

Arkansas Health  
Information Technology  
Regional Extension Center





# ARHITREC

- Cornerstone of the state's HIE Effort
- Designed to:
  - Recruit and Assist Eligible Providers
  - Implement and use Electronic Health Records in physician's practices to meet ONC **Meaningful Use** definition
  - Coordinate with Governor's HIE Task Force





# ARHITREC

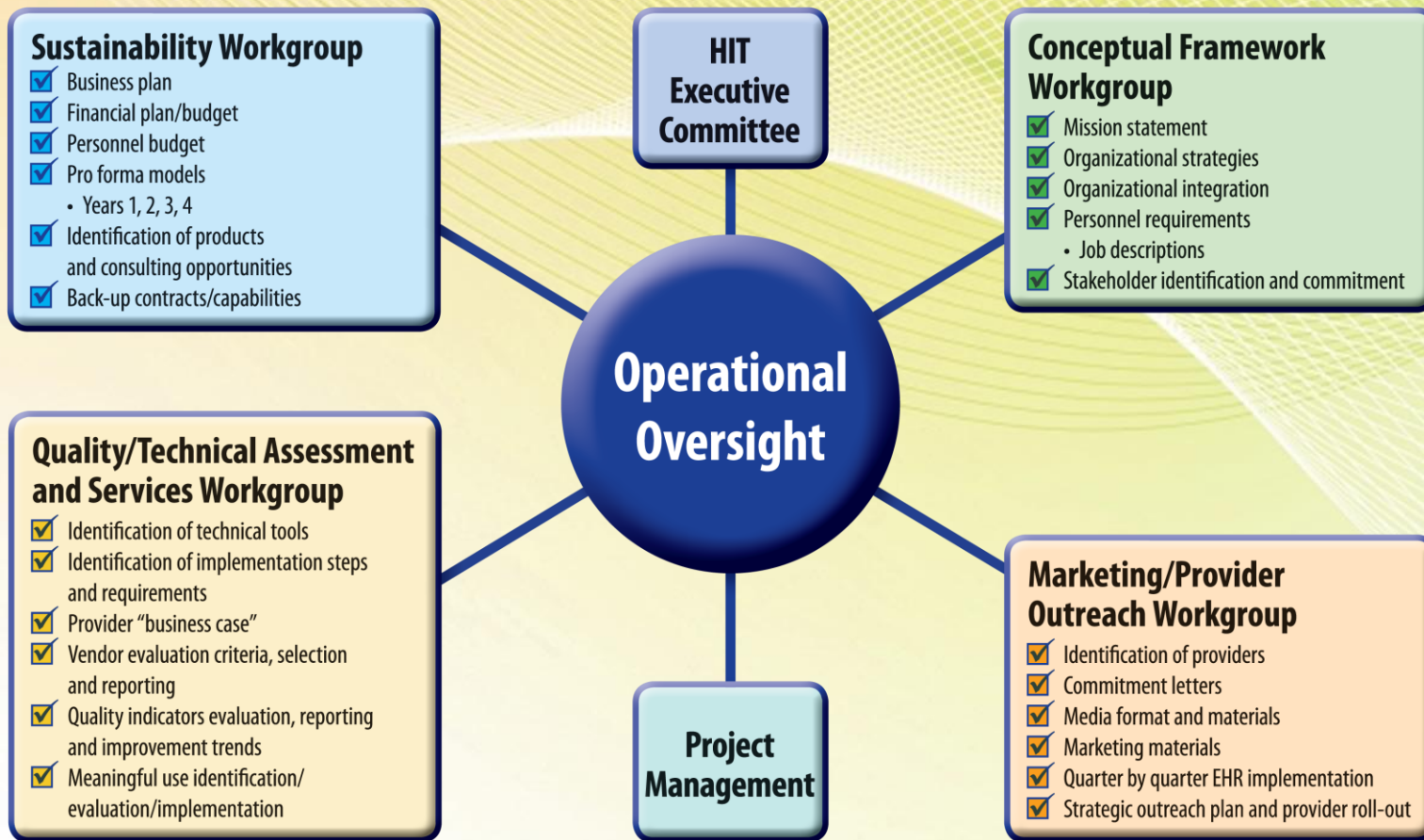
## INITIAL GOALS:

- 1,280 priority primary care physicians by end of year 2 to become certified “meaningful users” with Certified EHR Technology
- Additional 1,000 certified users by end of year 4
- Maintain ARHITREC Organizational sustainability beyond year 4
- Provide valued services to providers





# ARHITREC





# ARHITREC

## VISION:

All Arkansas providers successfully implement EHR as an initial step in supporting the use of HIT across the state and participate in a statewide HIE for providers and patients. This infrastructure leads to a significant improvement in the quality of the healthcare delivered and, subsequently, the quality and safety of health for the citizens of Arkansas





# ARHITREC

## **ELIGIBILITY:**

- To be eligible for incentive payments physicians must be able to prove they are “meaningful” EHR users

## **CRITERIA:**

- Demonstrate to HHS that they are using a certified EHR in a meaningful manner
- Participate in Electronic Prescribing
- Ability for the EHR to provide electronic exchange of health information to improve quality of healthcare
- Capable of submitting information to HHS for quality measures





# ARHITREC

## ORGANIZATIONAL ACTIVITIES:

- National Learning Consortium
- Provider Outreach and Servicing
- Vendor Selection and Group Purchasing
- Implementation and Program Management
- Practice and Workflow Redesign
- Privacy and Security Best Practices
- Post Implementation Consulting Services
- Additional Technical Support
- Functional Interoperability and HIE
- Local Workforce Support





# ARHITREC

## **COMMITTEE ACTIVITIES:**

- Quality and Technical Committee
- Vendor Evaluation Work Group
- Implementation Work Group
- Monitoring and Evaluation Work Group
- Practice Services Work Group





# ARHITREC

## TRANSITION AND IMPLEMENTATION ACTIVITIES:

- Internal Staff identification and assignment (*Completed*) [*the transition team*]
- Implementation Workgroup (*Completed*)
- Deliverables Definition
- Policy and Procedure Development
- Hiring and Training Highly Qualified Permanent Staff (*Initiated*)
- Transition of responsibilities within 90 days to ARHITREC Staff
- EXPECTED AWARD DATE: December 11, 2009
- AWARD START DATE: January 15, 2010

